



Maguire Woods

of Woodrow



www.SavoyHome.com

Standard Features for Maguire Woods

Homes range from approx. 2,353 sq. ft. to 2519 sq. ft.

Split Level Design Available

- Family room off kitchen with gas burning fireplace
- Hardwood floors throughout
- Ceramic floors in kitchen & family room
- Two (2) zone hot water heat
- One (1) zone central air conditioning
- Cathedral ceiling in master bedroom
- Whirlpool in master bath
- Granite kitchen countertops
- Brick Front facade
- Custom Moulding
- Eleven (11) hi-hats throughout the house
- Barbecue line & ice maker line
- Additional GFI in rear yard
- Pre-wired for alarm system
- Extra hose bib
- Fully sodded lot
- 9 ft ceiling on first floor

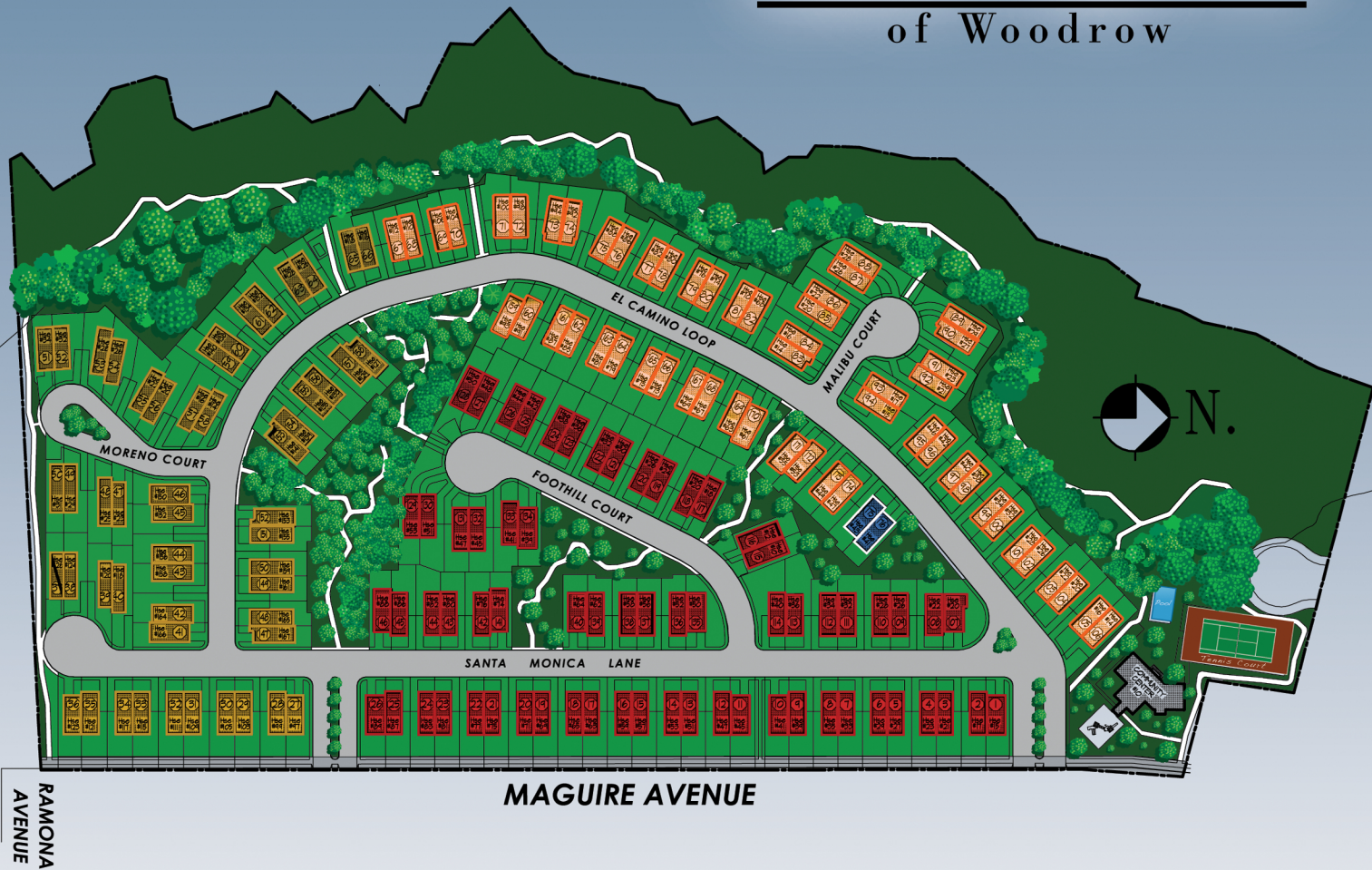
Community Features

- Winding cul-de-sac-roads, walking trails among huge mature trees in a private setting.
- Walk to new multi-million dollar park that features baseball fields, basketball courts, playground for children & much more.
- Easy commute to Manhattan
- Community Center with swimming pool and tennis court
- Excellent schools
- Close to major shopping & airports



Maguire Woods

of Woodrow

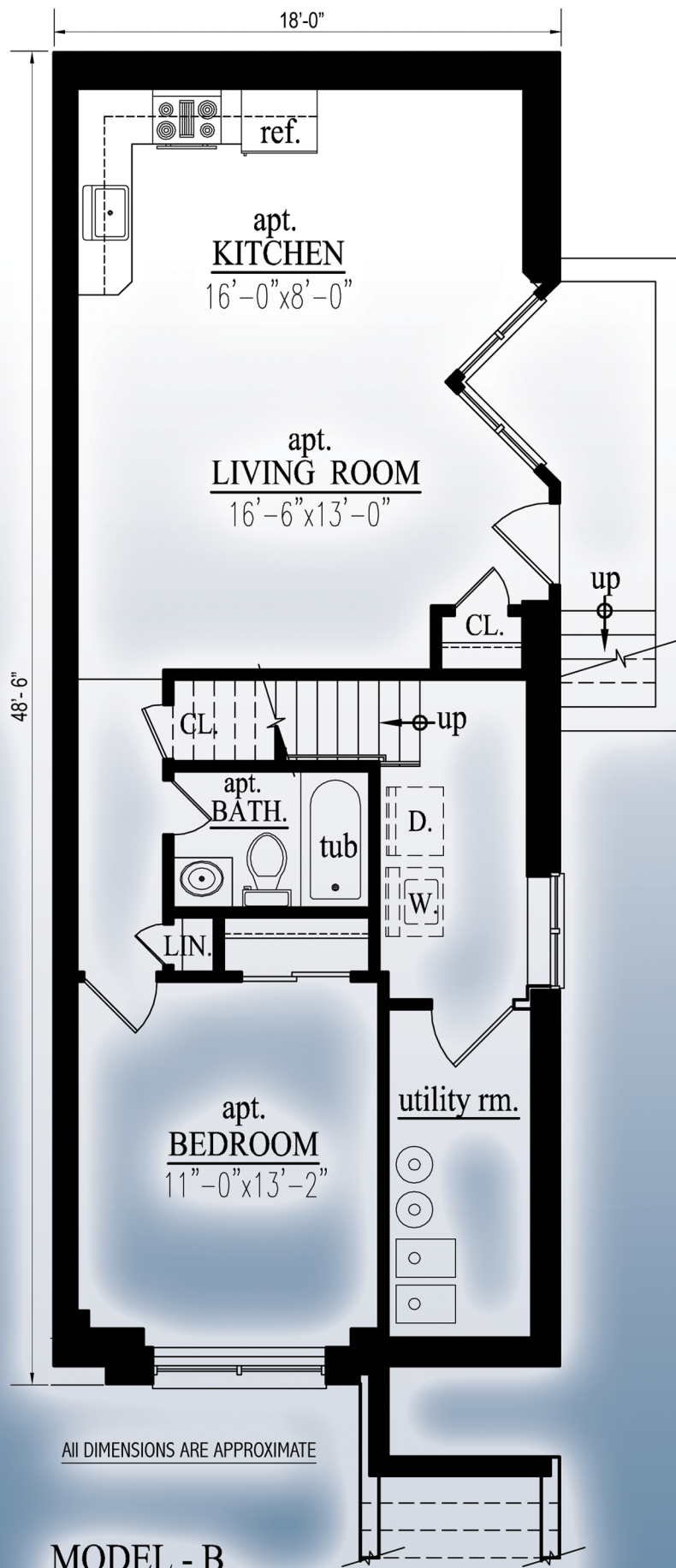


Model
 For Sale
 Sold
 Future

Directions to Maguire Woods

- 278 west to 440 south then exit Bloomingdale Road at the light

(Bloomingdale Road) make a left. Second light (Woodrow Road) make a left. Take Woodrow Road and turn right onto Maguire Avenue. Maguire Woods will be located on the right hand side of Maguire Avenue. (approximately 500 ft.).



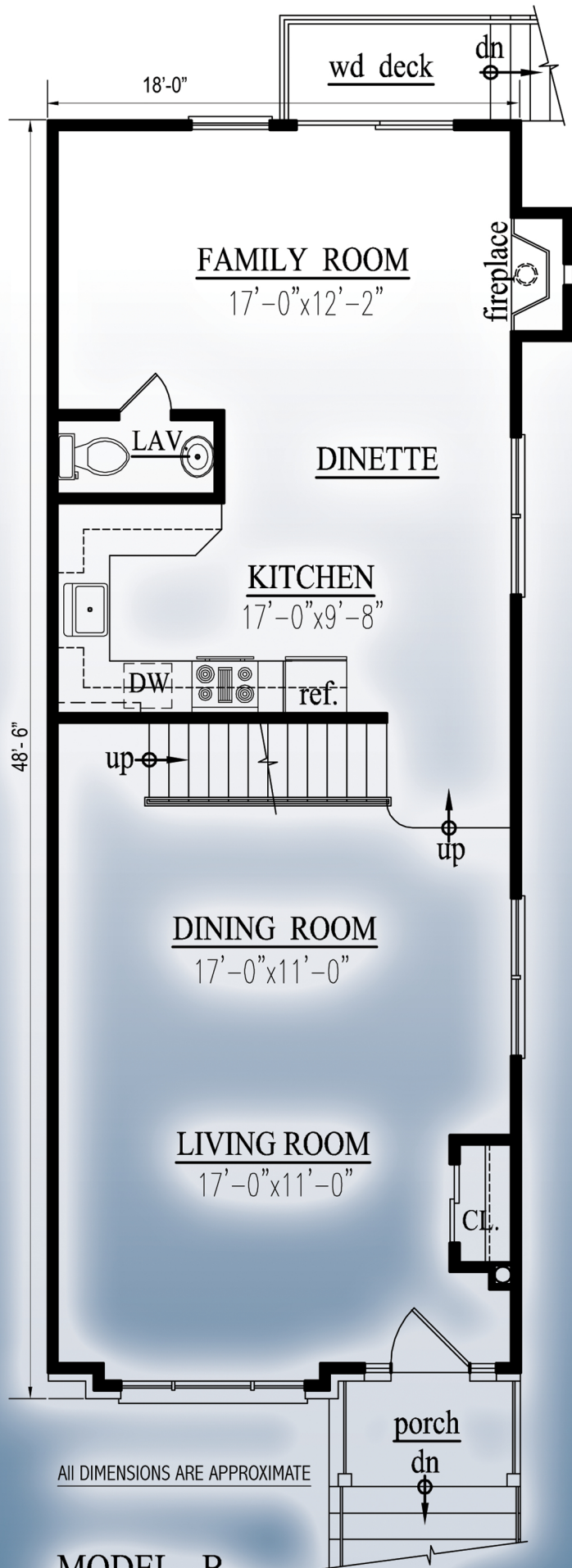
MODEL - B
BASEMENT / APT. FLOOR PLANS

(2-family)

NTS

HOUSE SQ. FT. = 1,800
 APT. SQ. FT. = 620

LAYOUTS SUBJECT TO CHANGE WITH GRADES

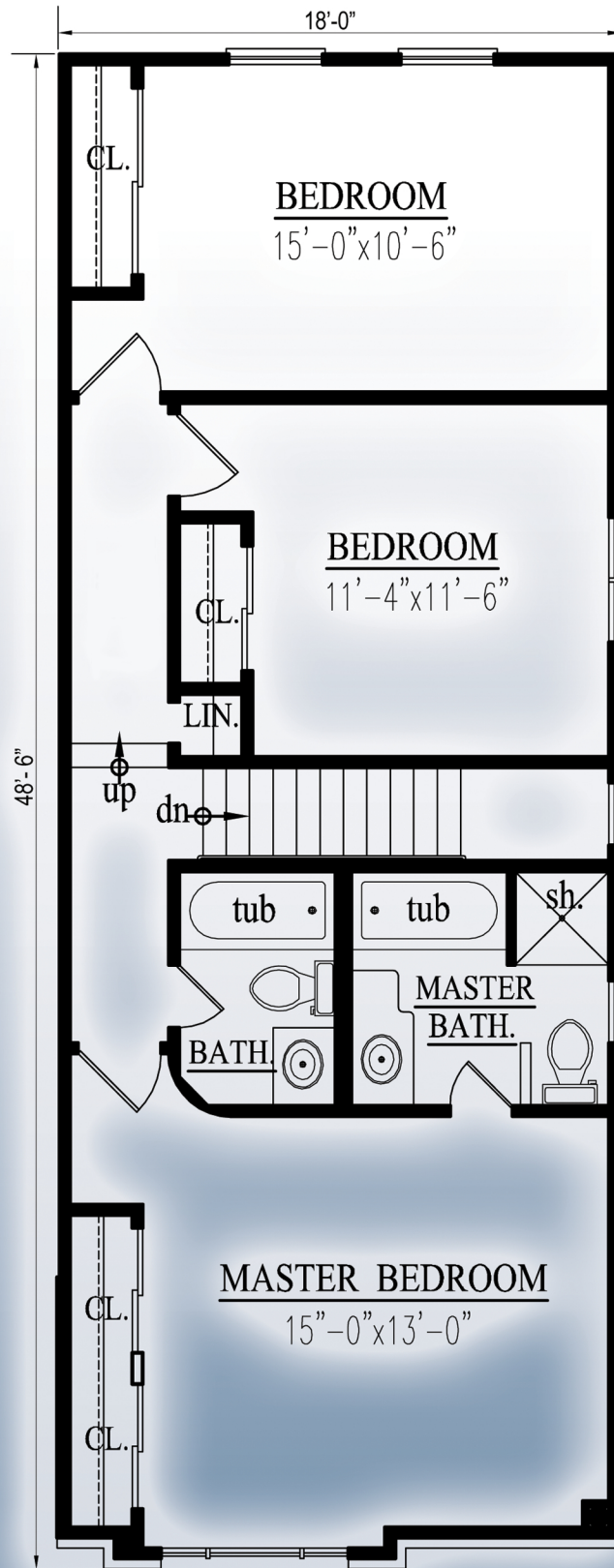


All DIMENSIONS ARE APPROXIMATE

MODEL - B
FIRST FLOOR PLAN
 (2-family)

NTS

LAYOUTS SUBJECT TO CHANGE WITH GRADES



ALL DIMENSIONS ARE APPROXIMATE

MODEL - B
SECOND FLOOR PLAN
 (2-family)

NTS

LAYOUTS SUBJECT TO CHANGE WITH GRADES